

ARM STRONG Group Company

ARM STITCH™

FIBC/BIG BAG SEWING MACHINE



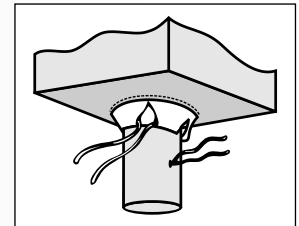
AS - 802 VMC

TECHNICAL DETAIL:

DOUBLE NEEDLE FOUR THREAD, CHAIN STITCH HIGH SPEED SEWING MACHINE.

APPLICATION:

Specially Designed For Sewing Filling & Discharging SPOUT for Container Bags. Most Suitable For SKIRT BAGS (Filler Cord From Top & Below Can Be Stitched For Sealing Needle Punctures).



AS - 802 VMC &
AS - 802 UFC

AS - 802 UFC

TECHNICAL DETAIL:

DOUBLE NEEDLE FOUR THREAD, CHAIN STITCH SEWING MACHINE WITH LOWERFEED & ALTERNATING UPPERFEED.

APPLICATION:

Specially Designed For Sewing Filling & Discharging SPOUT for Container Bags. Most Suitable For SKIRT BAGS (Filler Cord From Top & Below Can Be Stitched For Sealing Needle Punctures).



TECHNICAL PARAMETERS:

MODEL	MAX. SPEED (R.P.M.) APPROX.	WORKING SPEED (R.P.M.) APPROX.	STITCH RANGE (100 MM)	DISTANCE BETWEEN TWO NEEDLES	SEWING CAPACITY (MM)	NEEDLE SIZE	NO. OF NEEDLES	NO. OF THREAD	STITCHING THREAD TYPE	LUBRI-CATION	MOTOR
AS 802 VMC	3000	2800 depends on Sewing Material	11 - 16 * Adjus-table	8 mm	Up to 8 mm	DR X 2 #26 (Organ) (Groz-Beckert)	Two	Four	Multi Filament, Fabricated Yarn	Fully Auto-matic	1 H.P., 1 or 3 phase 1425-2850 RPM
AS 802 UFC	2700	2600 depends on Sewing Material	11 - 16 * Adjus-table	8 mm	Up to 11 mm	DR X 2 #26 (Organ) (Groz-Beckert)	Two	Four	Multi Filament, Fabricated Yarn	Fully Auto-matic	1 H.P., 1 or 3 phase 1425-2850 RPM

Mfg. By :



Ginza
MACHINERY MFG. CO.

Plot No. 1106/1107, Phase III, D-Road, G.I.D.C., Vatwa, Ahmedabad - 382 445. GUJARAT-INDIA

Phone : +91-79-2583 4255, 2583 0432 Fax : +91-79-2583 2255

E-mail : daspanchal@armstitch.com • pritesh@armstitch.com • pratik@armstitch.com Website : www.armstitch.com